

**Panasonic**  
ideas for life

[www.panasonic.com/proplasma](http://www.panasonic.com/proplasma)

# BIG DISPLAYS FOR BIG BUSINESS

85"/103"

1080p FULL HD Professional Plasma Displays

**Panasonic ideas for life**



Control 

**Panasonic Professional Display Company**  
Division of Panasonic Corporation of North America  
[www.panasonic.com/proplasma](http://www.panasonic.com/proplasma)

**Executive Office:**  
One Panasonic Way, 1F-10, Secaucus, NJ 07094  
201 392 4666

**Panasonic Canada Inc.**  
5770 Ambler Drive, 29 Mississauga, Ontario L4W 2T3 (905) 624-5010

**Panasonic Latin America S.A.**  
Head Office  
Apartado 0816-03164 Panama, Republica de Panama

**Panasonic de Mexico, S.A. de C.V.**  
Moras 313 Col. Tlacoquemecatl Del Valle Del.  
Benito Juarez Mexico, D.F. C.P.  
03200 (55) 5488 1000

**Phone for Contact Center**  
Panama: 800-PANA (7262)  
Colombia: 01-8000-94-PANA (7262)  
Ecuador: 1-800-PANASONIC (726276)

Simulated pictures on screen.  
Specifications are subject to change without notice. Printed in Japan

CT103/85 FHD-U01



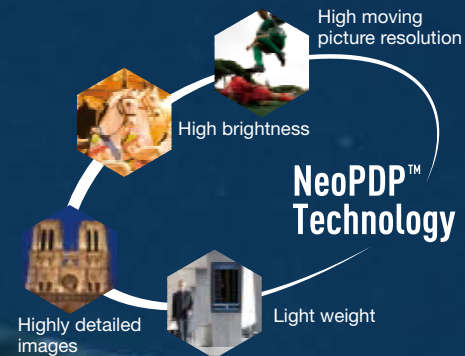
Displays realistic,  
life-size images.

**85** inches



Creates breath-taking scenes with incredible depth  
for large viewing spaces.

**103** inches



## Large Screens and Outstanding Image Quality Create A More Powerful Visual Impact.

Panasonic's NeoPDP™ technology, developed through integrating years of accumulated plasma technologies, doubles the luminous efficiency\* of our displays. Display panels featuring this new technology offer remarkably improved brightness, 40,000:1\*\* contrast, and enhanced motion image performance. From dazzling whites to deep, robust blacks, they portray a wide palette of colors with rich gradation. And even the tiniest of details in fast-action images are reproduced with crisp clarity thanks to 1,080 lines\*\* of moving picture resolution that achieves a level of quality only possible with high-definition displays. Panel sizes and weights have also been significantly reduced.

\*Comparing full-HD models to existing sizes with like 2007 Panasonic models.  
 \*\*1: ratio of the luminosity of the brightest and the darkest color the display is capable of producing simultaneously.  
 \*\*2: Moving picture resolution is a quantitative measurement of detail in displayed motion pictures discernible by the human eye. Using a measurement method developed and applied by the APDC (Advanced PDP Development Centre Corporation).

## Tough Display Panels with Impact-Resistant Hard Glass Panels

Hard glass carefully protects the front surface of all Panasonic Plasma displays. In the case of external impact, this durable design helps prevent cracking and other damage.

## Products That Help the Environment

Panasonic Professional plasma display panels offer a long life of approximately 100,000 hours.\*\* Regardless of whether they're used vertically or horizontally, you'll get years and years of sharp, beautiful images with minimum maintenance required. Panasonic also leads the industry in developing and mass producing lead-free plasma display panels. Panasonic was the first in the world to develop and mass-produce these panels. Our entire line of plasma display panels became lead-free in 2006 to minimize the impact on the environment following product disposal.

\*\*3: Guideline operating hours required before panel brightness is reduced by half when displaying motion pictures in Standard mode. After images (burned-in images) and malfunctions are not taken into consideration.

# Presentations

## Big as Life Promotions

Attract more viewers with crisper imagery. Large-screen plasma displays allow for more enticing presentations by accurately conveying information as it was originally intended. The wide viewing angle also ensures a clear picture when viewed from anywhere in the room along with superb full-HD images that bring remarkable impact to large-screen presentations.

### Share Your Message on a Large Screen

Sharp, crisp images and vibrant colors allow these large-screen displays to grab and hold your viewers' attention. The wide viewing angle assures everyone has a clear view regardless of where they sit, making it easy to share important information and ideas with others.



### Ideal Displays for Small and Medium Sized Rooms

You don't need a large conference room for a large-screen display. All you need is large, easy-to-read text, and a viewing distance that enables clear viewing, even from the back of the room. Panasonic Professional displays ensure high visibility in conference rooms seating as many as a dozen people, and also fit perfectly in small spaces too, thanks to their slim, compact design.

### On-Screen Text Displays

42(50)-inch Models

85(103)-inch Models



Comparing the materials shown on the display, the text shown on screen is double the size. An 18-point font that is commonly used for TV conferences can be clearly read from the furthest edges of the conference room.



Because the screen brightness can be adjusted to match the content, images can be displayed even in regular room lighting without causing eye strain.

## Installation Examples



**Tokyo Metro Co., Ltd.**  
Tokyo, Japan

This conference system, centring on a 103-inch plasma display, has been installed at the company's Response Headquarters. It supports accurate, swift decision-making in the event of a natural disaster.



**Kokushikan University**  
Tokyo, Japan

This 103-inch display was installed in the AV hall of the university library to allow accurate, clear reproduction of academic materials. In addition to supporting study and research activities, the display greatly improves the quality of lectures and serves to motivate overall learning.



**National University of Singapore**  
Singapore

The projector system previously used in the lecture room was replaced with this 103-inch plasma display. By doing so it resolved a number of problems, such as images being difficult to see unless the room was darkened, and the lecturer's shadow blocking the screen and projected images.

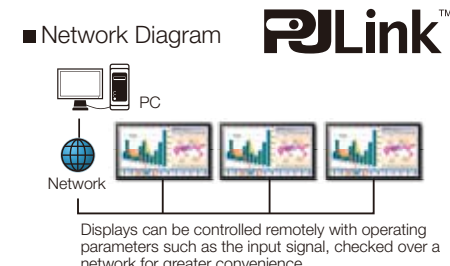
### 【Life-like Display】

A large screen enables true-to-life video conferences, making it feel like everyone is in the same room. Catching and understanding even nuanced expressions and reactions are easy with these breath-taking large-format displays.



### 【Network Functions】

A LAN connection lets you operate the display by remote control. Compatibility with the industry-wide PLink™ standard allows for efficient operation with existing infrastructure.



\*Applications have been filed for the trademark rights to PLink™ in Japan, the USA, and other countries and regions.

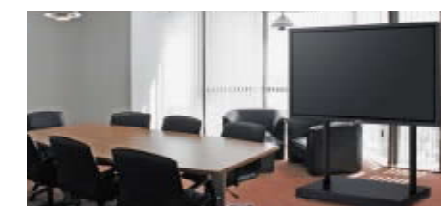
### 【Flexible Installation】

#### ■ Neat Wall Mounting

With projectors, you need to set up and then store the screen every time you use it. With a wall-mounted plasma, there's no such hassle. Just switch on the power, and you're ready to go.

#### ■ Flexible Floor Installation

An optional floor stand for the 85-inch model allows you install this display anywhere, without needing any additional wall reinforcement or mounting work.



# Digital Signage

## Experience the Appeal of Large-Screen Power

Dynamic large-screen images almost seem to jump off the screen. In addition to displaying the tiniest of details, large-screen displays can captivate viewers with true-to-life imagery. They can also display powerful moving video and bright digital signage content for any kind of business promotion.

### Eye-Catching Large-Screen Effects

The 7 foot (approx.) length of the 103-inch display provides much of its incredible impact. And the 85-inch display can project life-size images of people when installed vertically. Both of these large screens feature the kind of high definition imagery that can only be produced by the superior motion picture resolution of the plasma system. The clear, high-definition images of these displays, produce superb eye-catching effects.



### NeoPDP™ Technology – Twice the Luminous Efficiency

NeoPDP™ technology doubles\*1 the luminous efficiency of our previous 2007 models. In addition to higher screen brightness, this proprietary technology also minimizes power consumption to reduce running costs.

\*1 Compared with 2007 Panasonic models of the same size and resolution



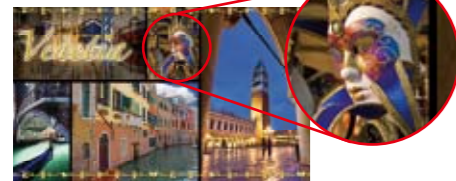
Insufficient depth expression (Conventional)

Enhanced three-dimensional effect (PF12 Series)

### 【Excellent Color Reproduction】

A wide color gamut that exceeds the HDTV standard\* for high-definition broadcasts faithfully reproduces the original image colors and textures. The wide viewing angle also beautifully and reliably conveys dynamic images, even in large public spaces.

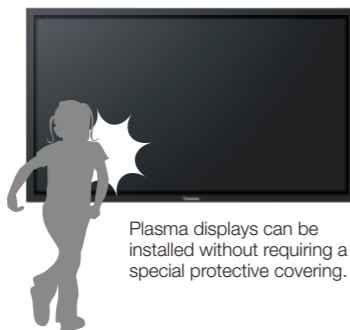
\*Standard: ITU-R BT.709



Subtle color shades and detailed textures are realistically displayed. These large, high-impact screens create impressive signage systems.

### 【Durability】

Impact-resistant tempered glass protects the front of the plasma display. This makes it possible to install displays in busy public spaces without the worry of it being damaged.



Plasma displays can be installed without requiring a special protective covering.

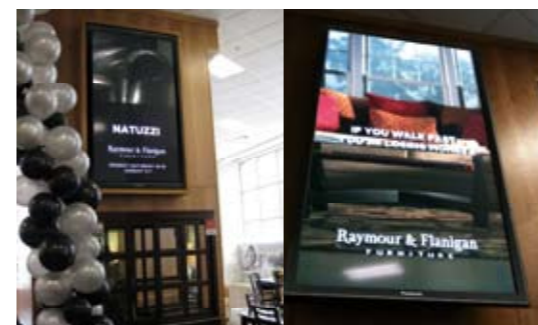
### 【Flexible Installation】

Neat and clean installations that don't block traffic paths are created by suspending displays from the ceiling or mounting them to a wall. The plasma display's wide viewing angle also ensures a clear view wherever it's mounted.



Unlike an ordinary signage system, you don't need to replace this display to change its content. This powerful, moving video signage system provides crisp, clear information that can produce a tremendous promotional effect.

## Installation Examples



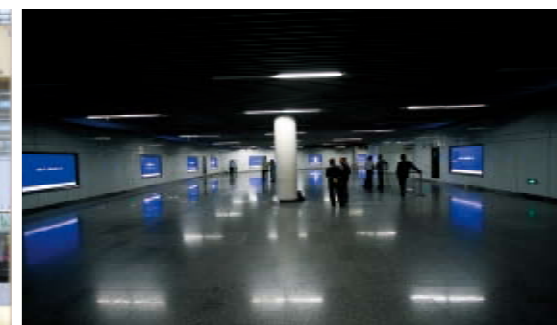
### Raymour & Flanigan USA

The materials in the fine furniture and fabrics that are exhibited at Raymour & Flanigan stores are displayed in highly realistic large-screen images. The 85-inch plasma display, which features a wide viewing angle and excellent clarity, displays consistently sharp, easy-to-see information.



### Flora Shopping Center Prague, Czech Republic

Three 103-inch plasma displays are suspended from the ceiling in a vaulted area of this popular shopping center. The digital signage presents clear information to each floor, giving customers a dynamic form of advertising that simply isn't possible with ordinary static signage.



### Shanghai Metro People's Square Station Shanghai, China

Digital signage with ten plasma displays was installed at this busy subway transfer station, which is used by more than 500,000 people daily. Compared to conventional illuminated signboards, these displays have a more powerful advertising effect due to their ability to display fast-moving images.

# TV Stations/Video Production

## High-Impact, High-Quality Large-Screen Images

Their high contrast and moving picture resolution provide clear and accurate views of everything from flip charts to live relays. Optional HD-SDI plug in terminal boards make them ideal for broadcasting use where optimal image quality is essential.

### In Television Studios...

#### Large-Screen Displays with a Slim Profile

Wall mounting enables a neat, clean layout even in small studio spaces. The slim design of the 85-inch model has a depth of only 3.9 inches. Panasonic large-screen displays can also give the room a stylish look while producing highly detailed images.

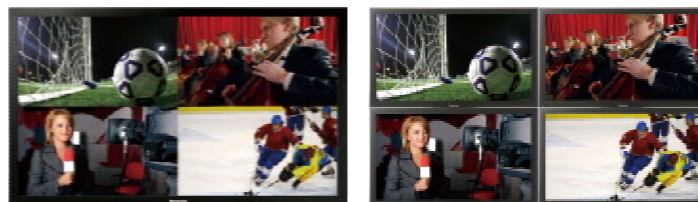


Compared to conventional displays that require considerable depth, Panasonic's slim plasma displays can be installed in practically any space.

### In Editing Rooms...

#### Faithful Color Reproduction

The 103-inch model is equivalent to four 50-inch screens, and the 85-inch model is equivalent to four 42-inch screens. When displaying multiple image sources, original image colors can be faithfully expressed without being affected by the contrast and color of adjacent images.



103-inch (85-inch)

50-inch (42-inch) x 4

\* An external screen splitter is required.

#### HD-SDI System Compatibility

Both displays are compatible with high-resolution, image-enhancing Dual Link HD-SDI (SMPTE372M compliant) and HD-SDI (SMPTE292M compliant) interfaces. They are capable of reproducing the outstanding, full digital image and sound transmission that is used in most broadcast facilities.

### < Optional Function Boards >

Dual Link HD-SDI Terminal Board with Audio  
**TY-FB11DHD**



- High quality and high definition interface terminal board
- Supports Dual Link HD-SDI (meets SMPTE372M standard), and HD-SDI (meets SMPTE292M standard)
- Supports DCI 2K (RGB4:4:4/YpPr 4:2:2 at 60p, 50p) without image resolution conversion.
- Supports SMPTE audio (16 channels) (this is only when the signal is multiplied to Dual Link HD-SDI Link: A)
- \* DCI refers to Digital Cinema Initiatives.

HD-SDI Terminal Board with Audio  
**TY-FB10HD**



- Enables viewing of digital high definition images from digital video equipment on a plasma display, using a terminal board compatible with the SDI system used by facilities such as broadcasting stations.
- Provides simultaneous video and audio signal transmission (16 channels) using a single cable.



## Installation Examples



**TV Tokyo Corporation**  
Tokyo, Japan

TV Tokyo installed a 103-inch display on their television news set to display images in full-HD quality. In addition to the impressive presence of the huge screen, the display's compact body gives the overall set design a neat and clean appearance.



**Channel Nine**  
Australia

A plasma display is used on set for a popular talk show called, "The Footy Show." This display presents fast-action sports scenes in high resolution and greatly enhances the video images that are displayed throughout the show's broadcast programming.



**Czech TV**  
Czech Republic

A 103-inch plasma display was installed in the studio of the "Good Morning Show." The large-screen display is situated behind the newscasters and its stunning images have become a highly distinguishing feature of the show.

# Amusement Facilities

## Vividly Colorful Spaces Created by Large-Screen Displays

These high-quality, large-screen displays are minimally affected by even the brightest surrounding illumination. Also, when multiple images with detailed information are displayed on a large screen they all appear bright and clear. This allows the display to clearly show several types of information simultaneously.

### Large-Screen Displays Attract Attention

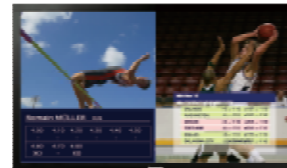
The 103-inch display dominates the scene even when it's installed in large and busy public spaces. Large-screen displays appeal strongly to viewers with their vibrant, high-density information, even in crowded areas. Their wide viewing-angle also ensures that all the images displayed clear and sharp and can be seen from virtually any angle allowing the highest impact.



### Simultaneous Display of Several Information Streams on Large, High-Resolution Screens

Because multiple messages can be displayed simultaneously on these high-visibility, large-screen models, there is no longer the problem of information being blocked by multi-screen frames. Several information streams, such as live broadcast images and sports results, can be clearly seen on these large and easy-to-read displays with little interference.

103-inch (85-inch) Multi-View Function



Multi-Screen System



There are no frames to block the information, so the information is easier to see.

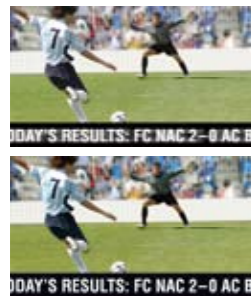


Game results and scores are clearly displayed even in dimly lit spaces, like darkened casinos, for easy reading.

## Installation Examples

### High Moving Picture Resolution for Sharp and Clear Display

A full 1,080 lines of moving picture resolution clearly ensures that even the fastest-moving action is displayed clearly, such as sporting events, and scrolling subtitles.

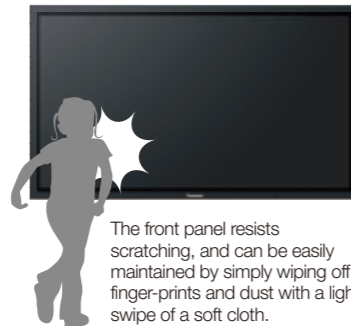


300 Lines of Moving Picture Resolution

1,080 Lines of Moving Picture Resolution

### Durability

Impact-resistant tempered glass protects the front of the plasma display to prevent cracking or damage in the event of impact. This also increases the level of customer safety.



The front panel resists scratching, and can be easily maintained by simply wiping off finger-prints and dust with a light swipe of a soft cloth.

### Flexible Installation

These displays can be mounted on the wall or suspended from the ceiling to provide a neat and clean installation appearance.



\*When installing more than one display on a wall, the wall strength must be confirmed by a qualified technician.



### IGT USA

IGT is the world's largest game machine manufacturer and holds the largest share of the slot machine market. IGT has integrated the 103" plasma display in some of its newest systems so a group of people can experience the gaming excitement at the same time.



### Hong Kong Jockey Club Hong Kong, China

Plasma displays have been installed in the clubhouse of the Hong Kong Jockey Club. The staff praise the durability of the plasmas as well as the fact that their excellent image quality clearly displays the fast motion action of the horses without any after-images.



### West Ashfield Leagues Club Australia

Several 103-inch plasma displays are installed at the spectator seats, game floor, and restaurant of the West Ashfield Leagues Club. Panasonic plasma displays can be individually configured and mounted either horizontally or vertically, they were ideally suited to meet the Club's special needs.

# Rentals/Exhibitions

## The High Impact of Large Screen in Crowds

Providing visitors with clear and accurate information is an essential task for every exhibition, even in spaces where crowds gather. Panasonic's large-screen plasma displays enable highly visible presentations with their wide viewing angle and high-resolution images. These displays also serve to captivate and potentially attract visitors to the event as well with their impressive size and attractive, eye-catching visuals.

### Large-Screen Displays Are Highly Visible

These bright displays leave a strong impression even when viewed from an adjacent walkway. They can provide all visitors a clear viewing angle from virtually any location. Their sharp, crisp images, even under bright lighting, help to enhance live presentation events. And because they are self-illuminating, the shadow of the presenter never blocks the screen, allowing accurate information to be clearly conveyed even in a crowded booth or promotional space.



### Flexible Installation

A variety of installation methods are available to match your needs. If ceiling suspension is not possible, the display can also be mounted to the wall. The 85-inch model can also be installed on the floor by using an optional floor stand, and both models can be installed either vertically or horizontally, depending on the images being displayed.



### 【Wide Viewing Angle】

The wide viewing angle enables the same information to be shared from any angle it's viewed from. This allows the points of your presentation to be more clearly visible to the largest number of visitors.



### 【Lifelike Color Reproduction】




Even when an actual product cannot be shown in the booth, these large-screen displays can display lifelike images of products in their actual sizes and colors.



### 【Weekly Command Timer】

By setting the display order and schedule, you can show the content in a planned and timed sequence without having to assign a staff member to manage operation.

#### ■ A Weekly Command Timer Example

-  8:00-11:00  
Show video images.
-  11:00-17:00  
Show images from a DVD player connected with an HDMI cable.
-  17:00-19:00  
Show PC images.  
• Use as a screensaver.
-  19:00-23:00  
Show PC images.  
• Use as a screensaver (with inverted colors).



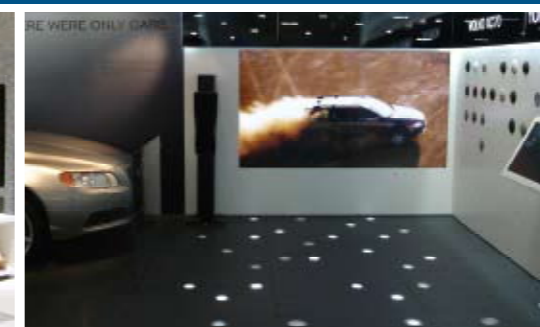
This makes it possible to conduct appealing promotions, such as showing car models or announcing new products that could not ordinarily be shown due to limited space.

## Installation Examples



### Himeji Tourist Information Center Hyogo, Japan

Himeji is a popular city for sightseers because it has a number of World Heritage Sites. Plasma displays were installed at the city's information center and their sharp, clear images convey the many attractions of the region to a large number of tourists each day.



### Volvo Car Corporation Sweden

A 103-inch plasma display was cleverly embedded into a wall to conserve showroom space. Its bright, high-resolution images promote current and upcoming models.

# Custom Home Theater

## Large-Screen Movies — Entertainment at Its Best!

Full-HD plasma displays are ideal for reproducing movies and sports programs. Their high moving picture resolution clearly shows fast motion, and their excellent color reproduction renders hues that are remarkably faithful to the original. These large-screen models make it possible to configure a theater system that has the image power to pull viewers right into the scene.

### Stunning Large-Screen Images

Images are reproduced with superb gradation, from dazzling whites to robust blacks, and exceptional moving picture resolution. Action movies and sports broadcasts can be clearly displayed with no after-images.



Even the darkest scenes in movies are faithfully reproduced without blocked shadows.

### Colors Are Faithful to the Original

A level of color expression that exceeds even the color gamut of the HDTV standard,\* renders the specific hues intended by filmmakers, to faithfully reproduce all colors particular to each image. In addition to movies, the images in TV programs are also produced with remarkably true-to-life colors.

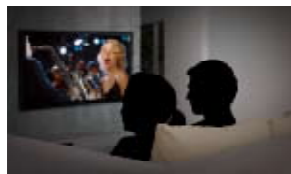
\* Standard name: ITU-R BT.709.



The wide color range displays beautiful images in all types of content.

### [Customized Viewing]

You can create, name, and store 8 different combinations of user adjustments from the menu. You can then easily switch to the preferred setting for viewing movies, sports, or playing video games.



**Watching movies**  
Watch movies in a darkened, theater-like atmosphere.



**Playing games**  
Crisp, vivid colors make games even more exciting.



**Watching sports**  
Show fast-moving athletes in vibrant colors.

### [Customizable Design]

Function slots let you connect the display to a wide range of devices, and make it easy to configure a theatre system. Connected devices can also be changed by simply exchanging the boards in the slots.



\*For details of the optional function boards, please visit our Professional Plasma Display site ([panasonic.net/proplasma](http://panasonic.net/proplasma)).



Breathtaking images can be enjoyed from any seat in the house, in a variety of viewing situations.



Mounting the unit on a wall ensures the display doesn't take up excessive space. The back of the display requires only 19.6 inches of space.



Plasma displays produce high-contrast images without having to dim the room lights.



# Professional Plasma Displays Meet a Wide Range of Needs — From Retail Stores to Open Public Spaces

Large-Screen, High-Resolution Displays Grab Attention and Convey Accurate Information

## Digital Signage

### Tokyo Broadcasting System Television, Inc.

Tokyo, Japan

This information transmission system with a 103-inch plasma display at its core was installed at an event space facing a subway station in Akasaka, Tokyo. Its highly reliable display of beautiful full-HD images has made it a very popular installation.



### Callaway Golf Company

Tokyo, Japan

The 103-inch plasma display transmits messages from the world's leading manufacturer of golf clubs, backed by beautiful images reflecting the company's brand image. High-resolution images with rich gradation are clearly displayed even with the brightest room lighting.



## Amusement

### Midland Square Cinema

Aichi, Japan

The 103-inch display, whose rich color gradation, deep black expression, and high moving picture resolution make it ideal for reproducing movies, has been installed in the lobby of this cinema complex. Even under natural sunlight, it displays clear images to provide customers with movie previews and other information.

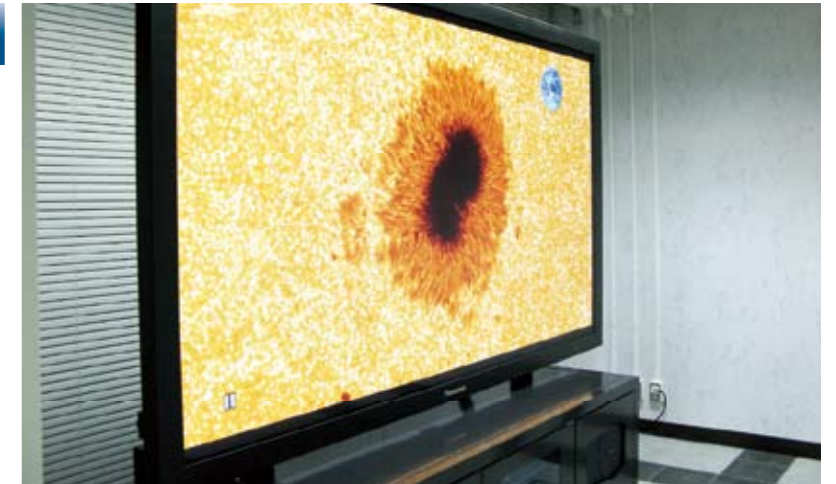


## Public Facilities

### National Astronomical Observatory of Japan

Tokyo, Japan

This display supports Japan's world-leading research into solar physics by clearly reproducing measurement data that was recorded using precision equipment on Hinode, a solar observation satellite. The wide viewing angle and dynamic power of the 103-inch display also boosts the effect of the facility's press releases which are displayed, as well.



### Hyogo Prefecture Disaster Management Center

Hyogo, Japan

Several 103-inch displays were installed at the core of the Center's disaster response information network. The displays serve to collect information and weather monitoring data from various regions during emergencies, to support meetings for planning counter measures.



## Education

### National Training Center

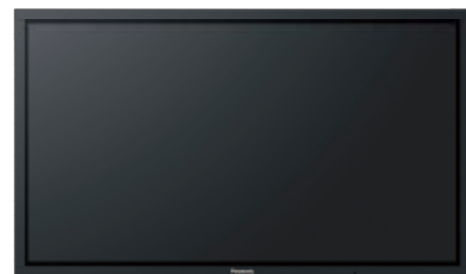
Tokyo, Japan

A 103-inch plasma display and HD camera were installed in the facility, where Japan's top athletes train. The plasma display's high moving picture resolution clearly shows athlete movements, thereby maximizing the effectiveness of training methods.





**TH-103PF12U**  
(Anti-Glare, Low-Reflection model)  
103-inch (260 cm) diagonal  
1080p High Definition Plasma Display

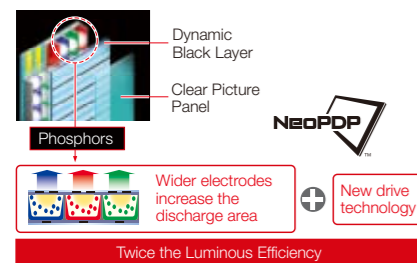


**TH-85PF12U**  
(Anti-Glare, Low-Reflection model)  
85-inch (217 cm) diagonal  
1080p High Definition Plasma Display



### NeoPDP™ Technology Doubles\*1 Luminous Efficiency

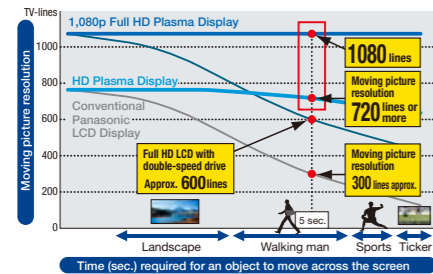
By developing new panel materials and redesigning structures, circuits and drive technology, NeoPDP™ technology was able to double\*1 the luminous efficiency over previous models. This also led to improvements in brightness, contrast and motion image performance.



\*1 Compared with 2007 Panasonic models of the same size and resolution.

### 1,080 Lines of Moving Picture Resolution Clearly Show Fast-Moving Images

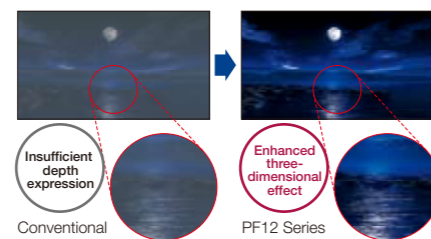
The high moving picture resolution of the plasma display clearly and accurately reproduces even fast-moving images while suppressing afterimages. The finest details are beautifully displayed with the superb resolution of full-HD.



\* Moving picture resolution is a quantitative measurement of detail in displayed motion pictures discernible by the human eye. Using a measurement method developed and applied by the APDC (Advanced PDP Development Center Corporation).

### 40,000:1 Contrast Produces Rich, Robust Blacks

A contrast ratio of 40,000:1 (with dynamic contrast of 2,000,000:1\*2) was achieved with image processing technologies like Panasonic's original Dynamic Black Layer. Rich blacks create a sense of depth that draws viewers right into the scene.



\*2: The ratio of brightness of a screen displaying an all-white signal to the brightness of a screen displaying an all-black signal.

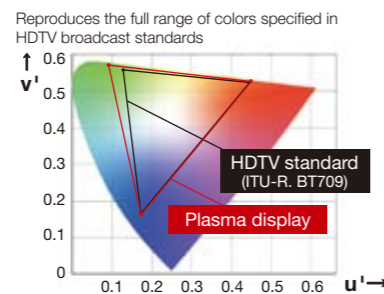
### High Level of Gradation 6,144 Equivalent Steps

A high level of gradation — 6,144 equivalent steps — has been achieved for virtually all kinds of scenes. Rich gradation extends from dazzling whites to robust blacks to render even finely detailed textures.



### Exceeding the Color Gamut of the Full-HD (HDTV) Standard

Hi-definition broadcasts are based on the HDTV standard\*3, rather than the conventional NTSC standard. Panasonic plasma displays reproduce a wide color gamut exceeding the entire color range specified in the HDTV standard (ITU-R, BT.709)\*4. This provides large-screen displays with natural colors that are faithful to the original images. Highly intricate images are also reproduced by using Digital Color Reality technology to digitally control video signals with a high degree of accuracy.



\*3: Standard name: ITU-R BT.709.  
\*4: Comparison based on color gamut

### Robust Displays for Installation in Public Spaces

Impact-resistant tempered glass protects the front surface of these plasma displays. In the case of an external impact, this durable design helps prevent cracking and other damage. The displays can be installed and operated in public spaces where large numbers of people pass through, without requiring an additional protective covering.

### Function Slots for Versatile Application

Three function slots allow the display's connection terminals to be easily exchanged. Simply select the function boards that are required for your image sources, and combine them accordingly.

\* For details of the optional function boards, please visit our Professional Plasma Display site (panasonic.net/proplasma).

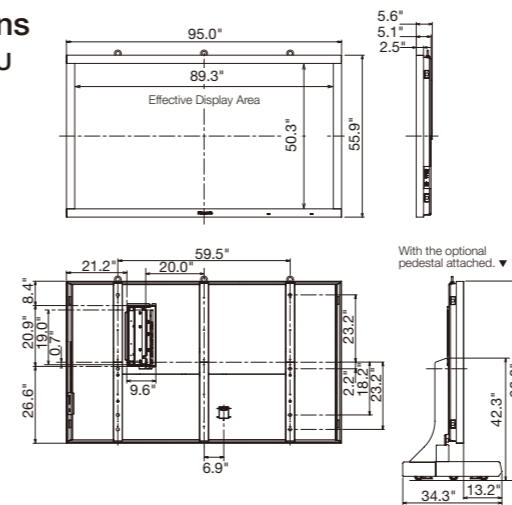
### Specifications

		TH-103PF12U	TH-85PF12U
DISPLAY	Screen Size (Diagonal)	102.5-inch	85.3-inch
	Aspect Ratio	16:9	16:9
	Effective Display Area (W x H)	89.3" x 50.3" (2,269 x 1,276 mm)	74.4" x 41.8" (1,889 x 1,062 mm)
	Number of Pixels (H x V)	1,920 x 1,080 pixels	1,920 x 1,080 pixels
	Pixel Pitch (H x V)	1.182 x 1.182 mm	0.984 x 0.984 mm
	Contrast Ratio	40,000:1	40,000:1
	Gradation	6,144 steps (equivalent)	6,144 steps (equivalent)
SIGNAL COMPATIBILITY	Scanning Frequency	Horizontal : 15 — 110 kHz / Vertical : 48 — 120 Hz	
	PC Signal Compatibility	VGA, SVGA, XGA, WXGA, SXGA, UXGA (Over SXGA resolution: compressed)	
INPUT	Video Signal Compatibility	525 (480)/60i, 60p; 625 (575)/50i, 50p; 625 (576)/50p; 750 (720)/60p, 50p; 1125 (1080)/60i, 50i, 24p, 24sF, 25p, 30p, 60p, 50p; 1250 (1080)/50i	
	COMPONENT IN	BNC x 3 (on Function Board)	
	AUDIO IN (for COMPONENT)	M3 x 1 (on Function Board)	
	HDMI IN	Type A connector x 2 (on Function Board)	
	PC IN	Mini D-sub 15-pin x 1	
CONTROL	RS-232C	M3 x 1	
		D-sub 9-pin x 1	
SOUND	Audio Output	RCA (L/R) x 1 set, Output level: variable (-∞ to 0 dB at 10kΩ)	
ELECTRICAL	Power Requirements	220-240 V AC, 50 Hz/60 Hz	120 V AC, 50 Hz/60 Hz
	Power Consumption	1,400 W	1,250 W
	Power off Condition	0.4 W	0.2 W
	Stand-by Condition	Save Off: 1.2 W, Save On: 0.7 W	Save Off: 1.0 W, Save On: 0.5 W
MECHANICAL	Dimensions (W x H x D)	95.0" x 55.9" x 5.1"*** (2,412 x 1,419 x 129.1 mm)	79.3" x 47.0" x 3.9" (2,015 x 1,195 x 99 mm)
	Weight (approx.)	443.2 lbs (201.0 kg)	260.2 lbs (118.0 kg)
	Number of Function Slots (Vacant)	3 (1 vacant)	3 (1 vacant)
OPERATION	Temperature	32 °F — 104°F (0 °C — 40 °C)	
	Humidity	20 % — 80 % (Non condensation)	
	Altitude	0 — 7,800 feet (0 — 2,400 m)	
	Radiation Regulations	FCC Part 15 Class-B, ICE-S 003, NOM approval	
	Safety Standards	UL6500 Ver.2 NOM approval	

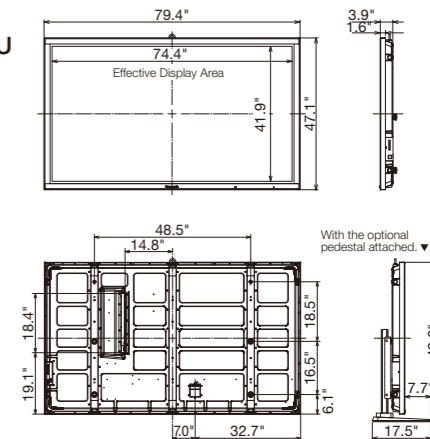
\*1: Exclusive of protruding portion (5.6" [141 mm] when including the protruding portion of the slot)

### Dimensions

#### TH-103PF12U



#### TH-85PF12U



(Unit: inch)

### Options

Pedestal	Wall-hanging bracket	Ceiling-hanging bracket	Floor stand
<b>TY-ST103PF9</b> Weight: 269.1 lbs (122.0 kg)	<b>TY-WK103PV9</b> Weight: 55.1 lbs (25.0 kg)	<b>TY-CE103PS10</b> Adjustable angle: 0° — 20° Weight: Vertical type: 33.1 lbs (15.0 kg) Inclined type: 81.6 lbs (37.0 kg) The photo shows the bracket at 20° incline.	<b>TY-ST85PF12</b> Weight: 108.8 lbs (82.0 kg) * To prevent overturning when using the floor stand, mount the stand brace to the wall. This will halt any vibration. The casters are not to be used for moving the main unit around.
<b>TY-ST85P12</b> Weight: 127.9 lbs (58.0 kg)	<b>TY-WK85PV12</b> Weight: 39.7 lbs (18.0 kg)	<b>TY-CE85PS12</b> Adjustable angle: 0° — 20° Weight: 77.2 lbs (35.0 kg) The photo shows the bracket at 20° incline.	